

Plug-and-Play DENTCloud™ Single or Multiple Load Metering Package

Remote Metering Made Simple

TBWC now offers a turnkey, plug-and-play DENTCloud™ metering package that delivers instant remote access to energy data without requiring customer IT, LAN infrastructure, or VPN setup.

Mount it. Power it. View it.

WHAT'S INCLUDED IN THE PACKAGE?

- DENTCloud™ Enabled single or MMU Multi-circuit Unit Meter
- Industrial VPN cellular Wi-Fi Router + 120V power supply
- SIM card with 1-year of cellular service included
- 5-Port Gigabit Ethernet switch with 120V power supply
- NEMA 5-15, 120-Volt duplex receptacle outlets
- CAT5/6 patch cables for meter communications
- Commercial grade NEMA 4X non-metallic enclosure package
 - DI-SA single-load meter package dimensions: 16" x 14" x 7"
 - DI-MMU multi-load metering unit package enclosure: 20" x 30" x 8"



How to order the Plug-and-Play DENTCloud™ package option that provides a safe and secure connection to view the meter data you need through any internet web browser.

- For a DI-SA single load meter, change the suffix from '.xx' to .04-DC01
- 3-Phase Load Examples:
- DI-4W/100-N1-KIT.xx → DI-4W/100-N1-KIT.04-DC01-PKG
 - DI-4W/200-N1-KIT.xx → DI-4W/200-N1-KIT.04-DC01-PKG
 - DI-4W/400-N1-KIT.xx → DI-4W/300-N1-KIT.04-DC01-PKG
- For a DI-MMU multi-circuit meter unit, change the suffix from '.xx' to .04-DC(04, 08, or 16)-PKG

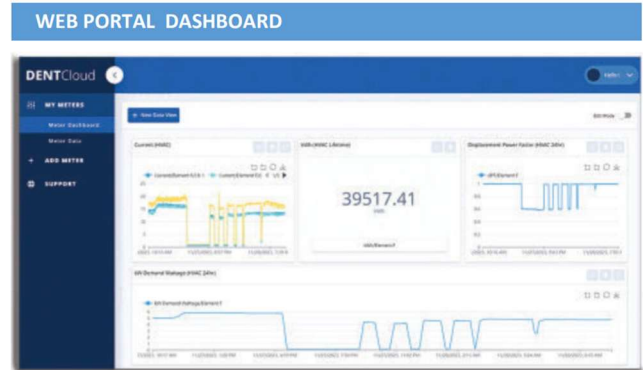
Ordering Examples:

- DI-MMU4-N1-1(VR).xx → DI-MMU4-N1-(1)VR.04-DC04-PKG
 - DI-MMU8-N1-1(VR).xx → DI-MMU8-N1-(1)VR.04-DC08-PKG
 - DI-MMU16-N1-1(VR).xx → DI-MMU16-N1--(1)VR.04-DC08-PKG
- (CTs for MMUs are ordered separately)

Plug-and-Play DENTCloud™ Single or Multiple Load Metering Package

DENTCLOUD PLATFORM HIGHLIGHTS

- Real-time dashboards and widgets
- Downloadable CSV data exports
- Secure REST API for third-party integration
- Works with any browser (PC, tablet, phone)
- Unlimited historical data storage
- Owner-controlled data access
- Revenue-grade accuracy
- No costly DAS, BMS, or middleware required

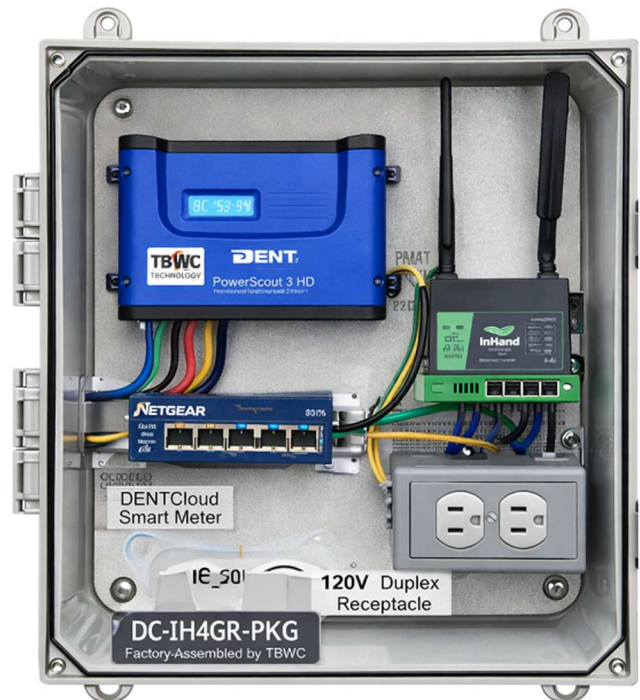


TBWC SUPPORT ADVANTAGE

- Fully installers and end user support
- Assistance with setup and configuration
- Help building dashboards and widgets
- Help setting up CSV exports and API access

WHY CUSTOMERS LOVE IT

- No LAN required
- No IT involvement
- No VPN setup
- No annual cloud subscription fees
- No per-point data charges
- Real-time data on any device
- Secure, revenue-grade energy data in the cloud
- There is never a subscription fee for DENTCloud data. Ever.



Plug-and-Play Metering is Here. Powered by TBWC + DENTCloud

Additional information available at www.TBWCtechnology.com or contact...(888) 562-1810 quotes@tbwcinc.com